

# B&C SHIELD SOFTSHELL PRO > JU C42

regular fit



**OUTER  
WEAR  
/UNIT**




Reflective piping at shoulder panels and bottom back for enhanced visibility

Seamless shoulder panels for better comfort and waterproofness




Reinforced patches (black) on shoulders & elbows and rear hem

Longer back for freedom of movement + warmth and protection when bending or kneeling


-  BLACK (002)
-  NAVY (003)
-  DARK GREY (670)

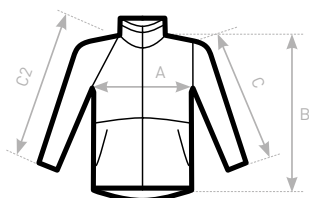


- Micro-fleece inner layer for extra warmth
- Ergonomic construction for best ease of movement enhanced thanks to fabric elasticity
- 5 multi-use and spacious pockets (3 outer + 2 inner)
- Adjustable bottom hem with drawcords and stoppers
- Full decoration access in front + back and sleeves

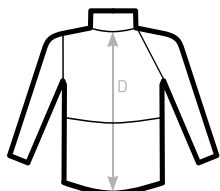
-  OUTER LAYER: 96% polyester  
4% elastane mini rip-stop
- MID LAYER: Bonded TPU membrane breathable, windproof and waterproof
- INNER LAYER: 100% polyester micro-fleece
- WATERPROOF: 2000 MM**
- BREATHABLE: 1000 MVP**

 S - M - L - XL - 2XL - 3XL - 4XL

 1 pc/pack & 10 pcs/carton



C2= RAGLAN SLEEVE



SIZES

| B&C SHIELD SOFTSHELL PRO JU C42 | S  | M    | L  | XL   | 2XL | 3XL  | 4XL |
|---------------------------------|----|------|----|------|-----|------|-----|
| A HALF CHEST                    | 51 | 54   | 57 | 60   | 63  | 66   | 69  |
| B BODY LENGTH FROM NECK POINT   | 71 | 72,5 | 74 | 75,5 | 77  | 78,5 | 80  |
| C SLEEVE LENGTH                 | 63 | 64,5 | 66 | 67,5 | 69  | 70,5 | 72  |
| D CENTER BACK LENGTH            | 75 | 76,5 | 79 | 79,5 | 81  | 82,5 | 84  |

## PROTECTION

- / Waterproof 2000mm, breathable 1000g/m<sup>2</sup>, windproof and thermo-insulated mini rip-stop softshell
- / TPU membrane mid layer for breathability, wind and waterproofing
- / micro-fleece inner layer for extra warmth
- / Standing collar, full length internal stormflap and chin protector for windproofing
- / Longer back for freedom of movement, warmth and protection when bending or kneeling
- / Reflective piping at shoulder panels and bottom back for enhanced visibility
- / Seamless shoulder panels for better comfort and waterproofness

## DURABILITY

- / Reinforced patches on shoulders, elbows and rear bottom in nylon Oxford, ensure increased resistance to abrasion and tears
- / Resistant rip-stop structure outer layer
- / Double topstitched seams for extra durability
- / Long lasting high quality SBS zipper

## STYLE AND FIT

- / High performance 3 layer rip-stop PRO softshell jacket
- / Modern and strong look
- / Carefully designed ergonomic construction for best ease of movement, enhanced thanks to fabric elasticity
- / Articulated sleeves to ensure a natural working position
- / Adjustable cuffs with closing tabs for better fitting body shapes

## FUNCTIONALITY

- / Multi-use and spacious pockets:
  - 2 easy access warm front pockets with zips and overlap to safely store your tools and goodies
  - 1 right chest pocket with zipper garage
  - 2 large and comfortable inner pockets

## DECORATION

- / Full decoration access in front, back and sleeves

## DETAILS

- / Self fabric inner collar
- / Adjustable bottom hem with drawcords and stoppers
- / Set-in sleeves

**B&C PRO / JUST KEEP WORKING**

# B&C SHIELD SOFTSHELL PRO > JU C42

**PRO**

## SEGMENTS

This high performance 3-layer rip-stop PRO softshell jacket is ergonomically designed to provide high levels of comfort, whatever the job. Its strong, modern look adds style but it's also waterproof and windproof, providing great protection to those working outdoors. Functional details complete the ideal partner at work.

GARDENING & LANDSCAPING

MAINTENANCE

BUILDING & CONSTRUCTION

The carefully designed ergonomic construction of this workwear softshell jacket ensures the wearer ease of movement, thanks to the elasticity of its fabric. A micro-fleece lining, full internal storm flap, standing collar and chin protector make it warm and really weatherproof, ideal for working outdoors, whatever the season. Functional, durable and reliable it's a perfect choice for the most hardworking team.

Light Workwear  
SME employees, Security,  
Technicians, Mechanics,  
Craftsmen, Foremen, Gardening  
& Landscaping, Building &  
Construction, Architects