



ADJUSTED FIT

- Fine 100% cotton poplin with **Easy Care** finish
- Soft feminine collar
- Cross stitched mother-of-pearl effect buttons
- Folded hem sleeves
- Darts at bustline & back panel for a feminine shape
- Horizontal last buttonhole
- Curved bottom hem



100% **combed** cotton

Poplin

120 g/m² (white) - 125 g/m² (colour)

XS > 4XL

1 pc/pack & 10 pcs/carton

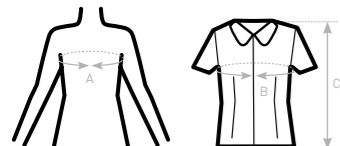


DUO
CONCEPT

with B&C Heritage SSL /men

SIZES [CM]

B&C HERITAGE SSL /W. SW P44		US	XS	S	M	L	XL	2XL	3XL	4XL	5XL	6XL
A	DRESS SIZE	FR 36	38	40	42	44	46	48	50	-	-	-
		IT 40	42	44	46	48	50	52	54	-	-	-
		EU 34	36	38	40	42	44	46	48	-	-	-
		UK 8	10	12	14	16	18	20	22	-	-	-
B	CHEST SIZE	CM 91	96	101	106	111	116	121	126	-	-	-
C	CENTER BACK LENGTH	CM 65	66	67	68	69	70	71	72	-	-	-



PURE COTTON WOMEN'S SHORT SLEEVED EASY CARE

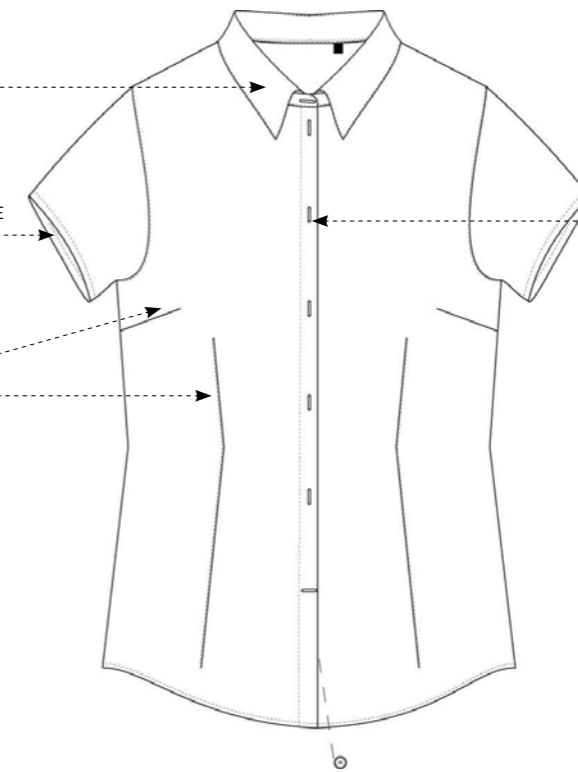
COMFORTABLE POPLIN SHIRT EASY CARE

SOFT FEMININE COLLAR

FOLDED HEM SLEEVE

DARTS AT BUSTLINE AND FRONT PANEL

CROSS STITCHED MOTHER-OF-PEARL EFFECT BUTTONS



DARTS AT BACK PANEL

CURVED BOTTOM HEM

