

KARIBAN

REFERENCE : K6104

SIZES : XS_S_M_L_XL_XXL_3XL

COMPOSITION :

Main fabric : Polyamide taslon PU milky coating 150
100%polyamide

Main fabric : Polyamide taslon PU milky coating 150 For
contrasted hood piping and contrasted inner tab (outer part
only) 100%polyamide

Mesh : Mesh 75 For hood lining and yokes on lining
100%polyester

Lining 2 : Lining 210T For lining 100%polyester

WEIGHT :

Main fabric : 150 gsm

Main fabric : 150 gsm

Mesh : 75 gsm

Lining 2 : 60 gsm

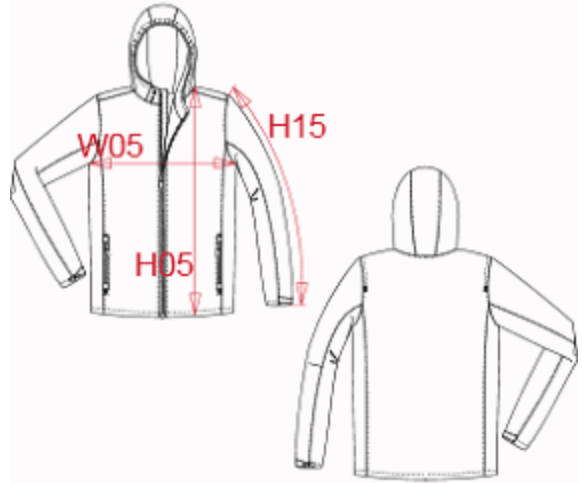
FABRIC CONSTRUCTION AND FINISHING :

With PU milky coating and full taped seams BR: 5000gsm/24h /

WP: 3000mm

ARTICLE WEIGHT :

520 gr/pc



DESCRIPTION										COLORS	PANTONE SERIGRAPHIE
Français : Veste imperméable unisexe English : Waterproof jacket Nederlands : Waterdichte jas Deutsch : WASSERDICHTE JACKE Español : Chaqueta impermeable Italiano : GIACCA IMPERMEABILE Português : Blusão waterproof										Navy	296C
MEASUREMENT											
Description	Tol +/-	Tol +/- Taille max	XS	S	M	L	XL	XXL	3XL		
H05 Hauteur totale / Total height			73,50	75,50	77,50	79,50	81,50	83,50	86,25		
W05 1/2 largeur poitrine / 1/2 chest width	2,5%	2,5%	54	57	60	63	66	69	73		
H15 Longueur manche / Sleeve length			64	66	68	70	72	74	76,25		
CARE LABEL											
PACKING											
Box	10 pcs / box XS-M => L:60cm W:35cm H:15cm GW:6.40kg NW:5.30kg L-XL => L:65cm W:40cm H:15cm GW:7.30kg NW:6.00kg XXL-3XL => L:70cm W:45cm H:15cm GW:8.10kg NW:6.70kg										