



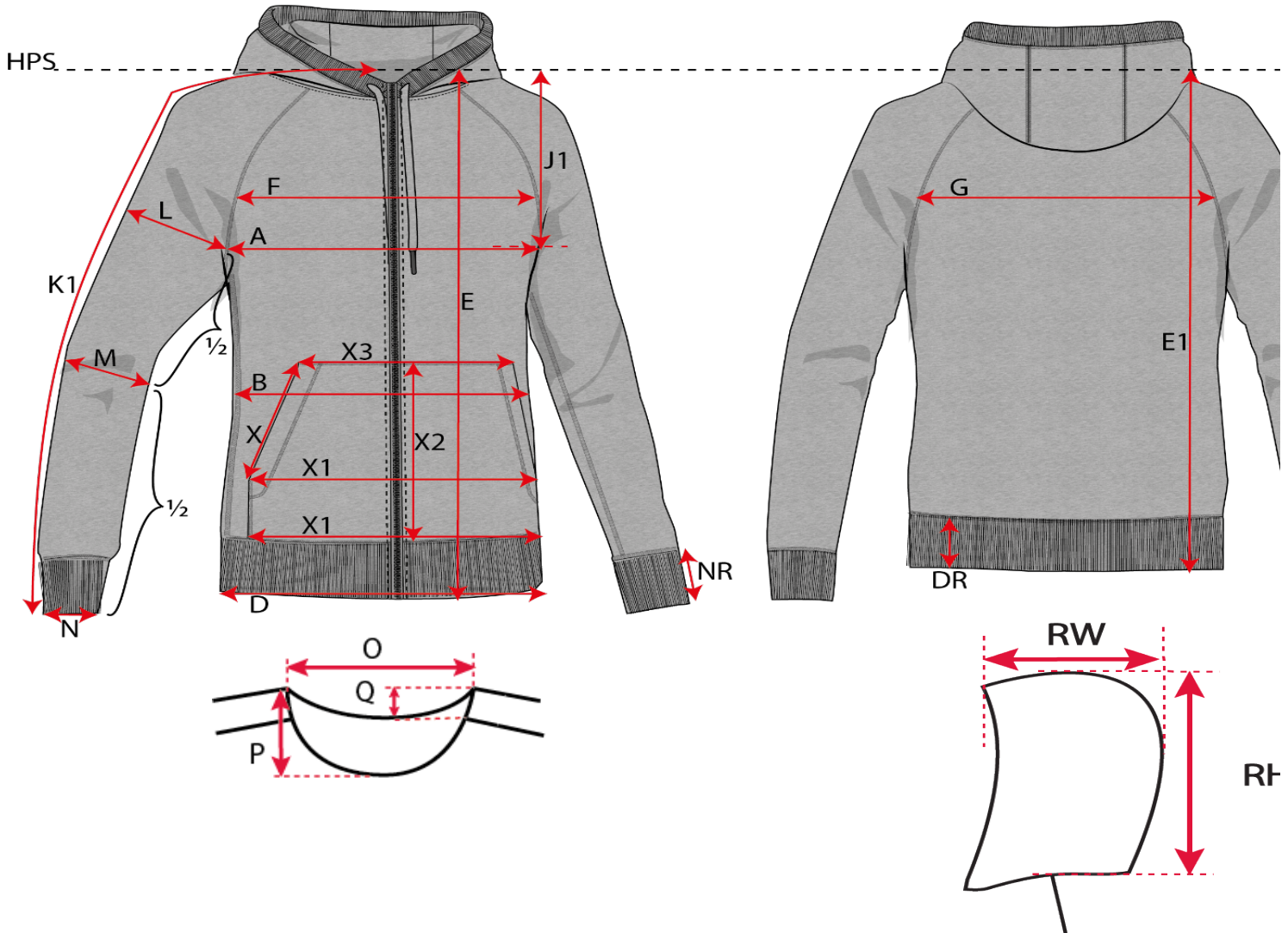
Article: 0639 - Ladies' hooded sweat cardigan (MMC)

									Sample
Size		XS	S	M	L	XL	2XL	3XL	
A	½ Chest, Armpit to Armpit	46	48	51	54	57	60	63	
BB	HPS to Waist	40	41	42	43	44	45	46	
B	½ Waist	42	44	47	50	53	56	59	
D	½ Bottom	41	43	46	49	52	55	58	
DR	Rib Height at Bottom	6,5	6,5	6,5	6,5	6,5	6,5	6,5	
E	Length from HPS, front	63	65	67	69	71	73	75	
E1	Length from HPS, back	62	64	66	68	70	72	74	
FF	HPS to front width	16,5	17,25	18	18,75	19,5	20,25	21	
F	Front Width	30	31,5	33	34,5	36	37,5	39,5	
GG	HPS to back width	16,5	17,25	18	18,75	19,5	20,25	21	
G	Back Width	31	32,5	34	35,5	37	38,5	40,5	
J1	Armhole Depth from HPS	21,1	22,05	23	23,95	24,9	25,85	26,8	
K1	Sleeve Length, LS from CB	81,5	83,25	85	86,75	88,5	90,25	92,25	
L	½ Upper arm width	16	17	18	19	20	21	22,25	
M	½ Elbow Width	13	13,75	14,5	15,25	16	16,75	17,6	
N	½ Sleeve Hem, LS	8	8,5	9	9,5	10	10,5	11	
NR	Rib height	6,5	6,5	6,5	6,5	6,5	6,5	6,5	
O	Neck Width	18,6	19,3	20	20,7	21,4	22,1	22,8	
P	Neck Drop Front from HPS	11,2	11,6	12	12,4	12,8	13,2	13,6	
Q	Neck Drop Back from HPS	4	4	4	4	4	4	4	
RW	Hood Width	24,5	25,25	26	26,75	27,5	28,25	29	
RH	Hood Height	33	34	34	35	35	36	36	
	Draw string length	98	98	100	100	102	102	104	
X	Pocket opening	15	16	16	17	17	17	18	
X1	Pocket width	33	34	35	36	37	38	39	
X1	Pocket width	30	31	32	33	34	35	36	
X2	Pocket height	20	20,5	21	21,5	22	22,5	23	
X3	Pocket width, top	21	22	23	24	25	26	27	

All measurements are in centimeters (cm)

HOW TO MEASURE
 SIZE NOT TO SCALE
 NOT FOR DESIGN

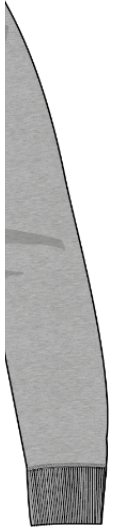
Article: 0639 - Ladies' hooded sweat cardigan (MMC)



Tolerance

+/-1
+/-0,5
+/-1
+/-1
+/-0,2
+/-1
+/-1
+/-0,5
+/-1
+/-0,5
+/-1
+/-0,5
+/-1
+/-0,5
+/-0,5
+/-0,2
+/-0,2
+/-0,5
+/-0,2
+/-0,2
+/-0,5
+/-0,5
+/-1
+/-0,5
+/-1
+/-1
+/-0,5
+/-1

1.02.2018



+



Article: 0639 - Ladies' hooded sweat cardigan (MMC)

OLD

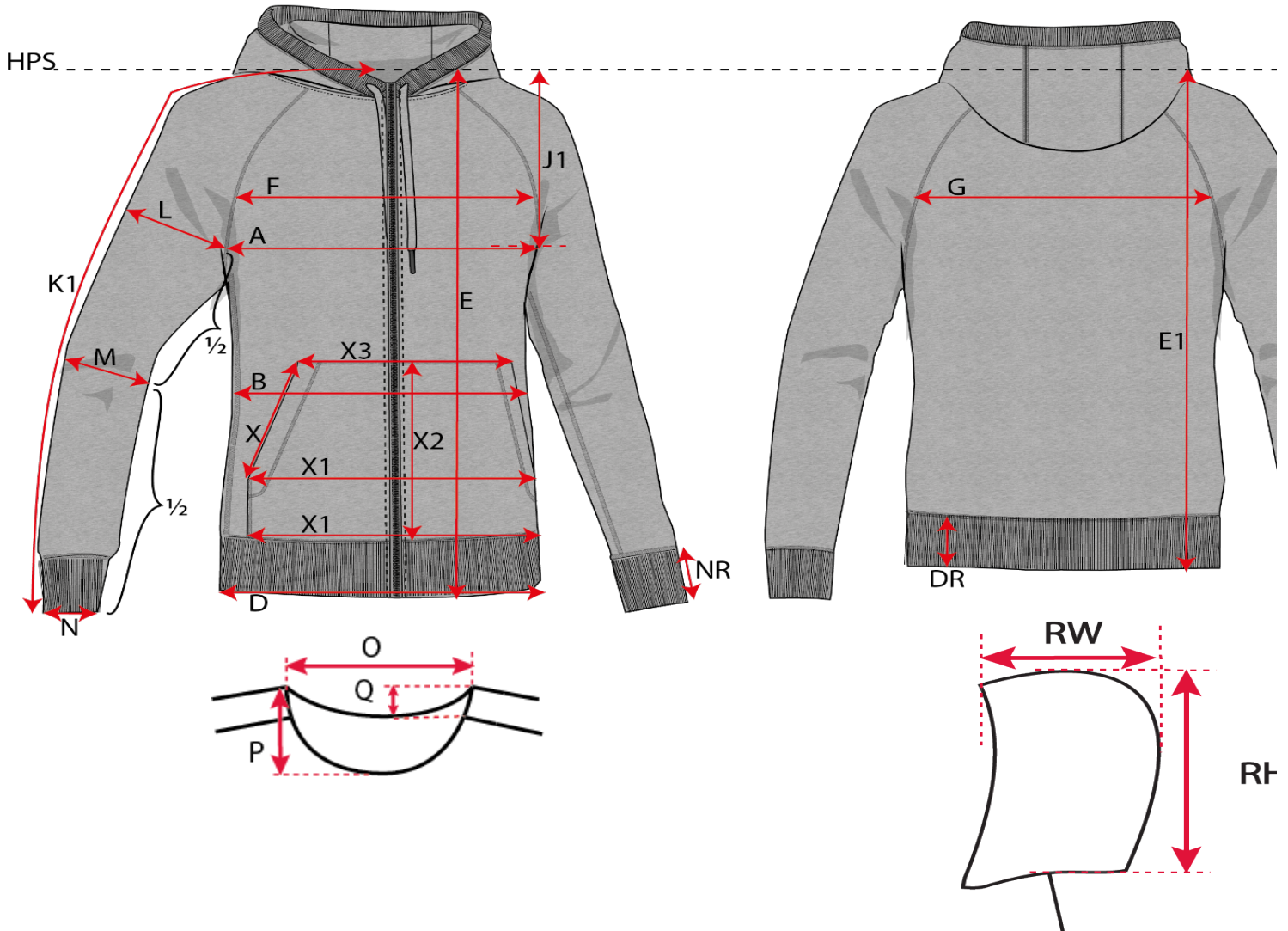
Sample

Size		XS	S	M	L	XL	2XL	3XL	
A	½ Chest, Armpit to Armpit	46	48	51	54	57	60	63	
BB	HPS to Waist	40	41	42	43	44	45	46	
B	½ Waist	42	44	47	50	53	56	59	
D	½ Bottom	41	43	46	49	52	55	58	
DR	Rib Height at Bottom	6,5	6,5	6,5	6,5	6,5	6,5	6,5	
E	Length from HPS, front	62	64	66	68	70	72	74	
E1	Length from HPS, back	61	63	65	67	69	71	73	
FF	HPS to front width	16,5	17,25	18	18,75	19,5	20,25	21	
F	Front Width	30	31,5	33	34,5	36	37,5	39,5	
GG	HPS to back width	16,5	17,25	18	18,75	19,5	20,25	21	
G	Back Width	31	32,5	34	35,5	37	38,5	40,5	
J1	Armhole Depth from HPS	21,1	22,05	23	23,95	24,9	25,85	26,8	
K1	Sleeve Length, LS from CB	80,5	82,25	84	85,75	87,5	89,25	91,25	
L	½ Upper arm width	16	17	18	19	20	21	22,25	
M	½ Elbow Width	13	13,75	14,5	15,25	16	16,75	17,6	
N	½ Sleeve Hem, LS	8	8,5	9	9,5	10	10,5	11	
NR	Rib height	6,5	6,5	6,5	6,5	6,5	6,5	6,5	
O	Neck Width	18,6	19,3	20	20,7	21,4	22,1	22,8	
P	Neck Drop Front from HPS	11,2	11,6	12	12,4	12,8	13,2	13,6	
Q	Neck Drop Back from HPS	4	4	4	4	4	4	4	
RW	Hood Width	24,5	25,25	26	26,75	27,5	28,25	29	
RH	Hood Height	33	34	34	35	35	36	36	
	Draw string length	98	98	100	100	102	102	104	
X	Pocket opening	15	16	16	17	17	17	18	
X1	Pocket width	33	34	35	36	37	38	39	
X1	Pocket width	30	31	32	33	34	35	36	
X2	Pocket height	20	20,5	21	21,5	22	22,5	23	
X3	Pocket width, top	21	22	23	24	25	26	27	

All measurements are in centimeters (cm)

HOW TO MEASURE
 SIZE NOT TO SCALE
 NOT FOR DESIGN

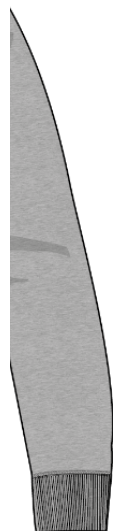
Article: 0639 - Ladies' hooded sweat cardigan (MMC)



Tolerance

+/-1
+/-0,5
+/-1
+/-1
+/-0,2
+/-1
+/-1
+/-0,5
+/-1
+/-0,5
+/-1
+/-0,5
+/-1
+/-0,5
+/-0,5
+/-0,2
+/-0,2
+/-0,5
+/-0,2
+/-0,2
+/-0,5
+/-0,5
+/-1
+/-0,5
+/-1
+/-1
+/-0,5
+/-1

5.10.2017



+