

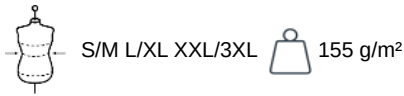
KARIBAN

K822

Ladies' tunic

- Washable at 60°, perfect for professional use.
- Durable, supple and hard-wearing fabric.
- Lightweight and comfortable fit.

65% polyester/35% cotton. Washable at 60°C. Resistant fabric and regular fit. Large front pocket with 2 compartments with 1 small inner pocket. Adjustable side tabs with 2 press studs. Contrasting piping on top of pocket. 1 name label inside. Rounded hem. Size L/XL length: 78 cm.



Certifications



More information

Logistic



Country of origin

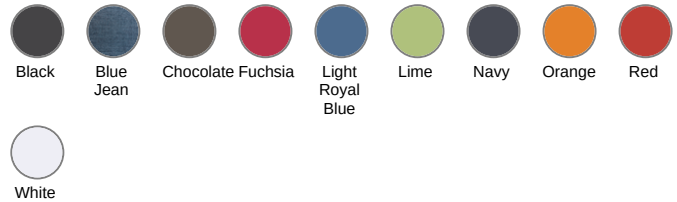


PK - Pakistan

Customs code



62114310

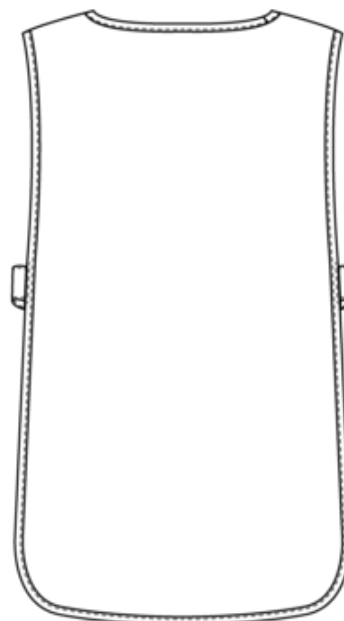
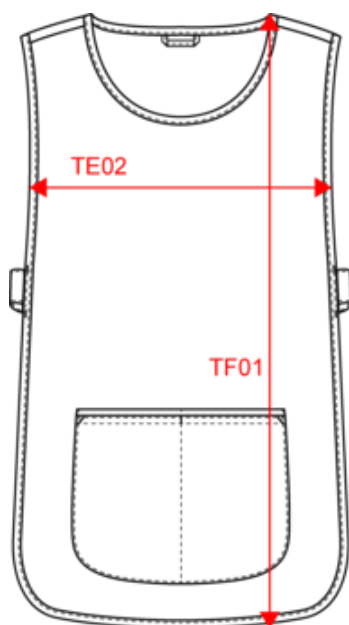


KARIBAN

K822

Ladies' tunic

Dimensions (cm)












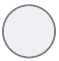
Measurements in cm	S/M	L/XL	XXL/3XL
TE02 - 1/2 chest width at armhole bottom line	40.00	46.00	52.00
TF01 - Total height from HSP	74.00	78.00	82.00



KARIBAN

K822

Ladies' tunic

Colours information

 Black RVB : 35,35,37 Pantone C : Black Pantone TCX : 19-4004TCX	 Blue Jean RVB : Pantone C : Jean Pantone TCX : Jean	 Chocolate RVB : 63,52,49 Pantone C : 412C Pantone TCX : 19-0910TCX	 Fuchsia RVB : 188,21,94 Pantone C : 7425C Pantone TCX : 18-1945TCX	 Light Royal Blue RVB : 53,95,151 Pantone C : 653C Pantone TCX : 18-4041TCX
 Lime RVB : 151,202,91 Pantone C : 367C Pantone TCX : 14-0244TCX	 Navy RVB : 41,46,56 Pantone C : 433C Pantone TCX : 19-4012TCX	 Orange RVB : 252,107,16 Pantone C : 1585C Pantone TCX : 16-1364TCX	 Red RVB : 195,32,54 Pantone C : 200C Pantone TCX : 19-1664TCX	 White RVB : 236,236,252 Pantone C : White Pantone TCX : 11-0601TCX

Logisti  10  50

Sizes	Width (cm)	Height (cm)	Length (cm)	Net weight (kg)	Gross weight (kg)	Pieces/Box	Pieces/Bundle
S/M	40.00000	14.00000	60.00000	7.40000	8.50000	50	10
L/XL	40.00000	14.00000	60.00000	8.40000	9.50000	50	10
XXL/3XL	40.00000	14.00000	60.00000	9.40000	10.50000	50	10