

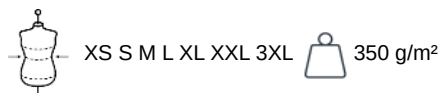
KARIBAN

KV2312

Vintage sherpa-lined fleece jacket

- Intentionally faded for a unique and trendy look.
- Incredibly warm and comfortable with sherpa lining.
- Vintage Collection. NO LABEL.

80% cotton / 20% polyester. 100% Polyester fully sherpa-lined. 2 piped front pockets. Metal zip fastening. 4x4 ribbed neck, hood edge, cuffs and hem. 2 invisible zippers on left chest and left seam for decoration access. This product has been specially treated and appears intentionally aged. This manufacturing process results in colour variations between products and makes each piece unique. No brand label at neck, only size tag for easy relabelling.



Certifications



More information

Logistic



Country of origin



BD - Bangladesh

Customs code



61102099

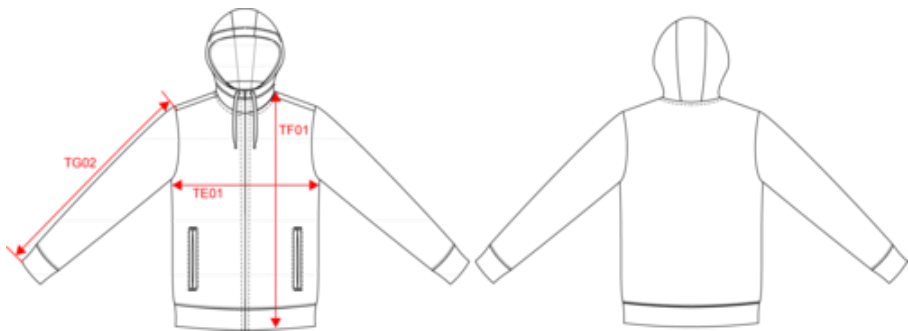


KARIBAN

KV2312

Vintage sherpa-lined fleece jacket

Dimensions (cm)



Measurements in cm	XS	S	M	L	XL	XXL	3XL
TE01 - 1/2 chest width at 1.5cm below armhole	49.50	52.50	55.50	58.50	61.50	64.50	67.50
TF01 - Total height from HSP	67.50	69.50	71.50	73.50	75.50	77.50	79.50
TG02 - Long sleeve length	66.00	67.00	68.00	69.00	70.00	71.00	72.00

KARIBAN

KV2312

Vintage sherpa-lined fleece jacket

Colours information



Night Blue Heather
RVB :
Pantone C : Based on 432C
Pantone TCX : Based on 19-4019TCX



Slub Grey Heather
RVB :
Pantone C : Based on 7539C
Pantone TCX : Based on 17-5102TCX

Logistic

 1  5

Sizes	Width (cm)	Height (cm)	Length (cm)	Net weight (kg)	Gross weight (kg)	Pieces/Box	Pieces/Bundle
XS	40.00000	30.00000	60.00000	6.20000	7.70000	5	1
S	40.00000	30.00000	60.00000	6.50000	8.00000	5	1
M	40.00000	30.00000	60.00000	6.80000	8.30000	5	1
L	40.00000	30.00000	60.00000	7.10000	8.60000	5	1
XL	40.00000	32.00000	60.00000	7.50000	9.00000	5	1
XXL	40.00000	32.00000	60.00000	8.00000	9.50000	5	1
3XL	40.00000	32.00000	60.00000	8.40000	9.90000	5	1