

# PROACT.®

REFERENCE : PA378

SIZES : XS\_S\_M\_L\_XL\_XXL\_3XL

**COMPOSITION :**

Main fabric : Polyester / Viscose / Elastane Tech fleece 79/15/6  
 - 310 For heather color 79%polyester / 15%viscose / 6%  
 elastane

Main fabric : Polyester / Elastane Tech fleece 94/6 - 310 For  
 solid colors 94%polyester / 6%elastane

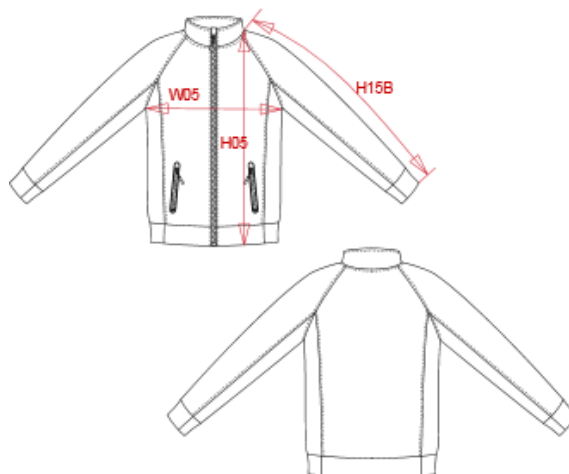
**WEIGHT :**

Main fabric : 310 gsm

Main fabric : 310 gsm

**ARTICLE WEIGHT :**

606 gr/pc



DESCRIPTION
<b>Français :</b> Veste col montant
<b>English :</b> High neck jacket
<b>Nederlands :</b> Jasje met opstaande kraag
<b>Deutsch :</b> Jacke mit hochgeschlossenem Kragen
<b>Español :</b> Sudadera/Chaqueta cuello alto
<b>Italiano :</b> Giacca con collo alto
<b>Português :</b> Casaco com gola subida

COLORS	PANTONE SERIGRAPHIE
Deep grey heather	Based on 447C
Black	Black
French navy heather	Based on 432C

MEASUREMENT							
Description	XS	S	M	L	XL	XXL	3XL
<b>W05 (M)</b> 1/2 largeur poitrine à 1.5cm de l'emmanchure / 1/2 chest width at 1.5cm below armhole	48	51	54	57	60	63	66
<b>H05 (M)</b> Hauteur totale / Total height	69	71	73	75	77	79	81
<b>H15B (M)</b> Longueur manche avec poignet / Sleeve length with cuff	74,25	76	77,75	79,50	81,25	83	84,75

CARE LABEL

PACKING	
Box	15 pcs / box XS => L:60cm W:40cm H:22cm GW:8.2kg NW:7.7kg S => L:60cm W:40cm H:22cm GW:8.7kg NW:8.2kg M => L:60cm W:40cm H:22cm GW:9.1kg NW:8.6kg L => L:60cm W:40cm H:22cm GW:9.6kg NW:9.1kg XL => L:60cm W:40cm H:22cm GW:10.2kg NW:9.7kg XXL => L:60cm W:40cm H:22cm GW:10.4kg NW:9.9kg 3XL => L:60cm W:40cm H:22cm GW:10.8kg NW:10.3kg