

# B&C OXFORD SSL /MEN - SM 002

THE SHIRT CULTURE  
BE INSPIRED



## REGULAR FIT

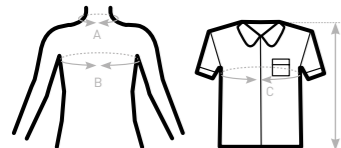
- Cotton rich polycotton Oxford fabric with **Easy Care** finish
- Soft button-down collar
- Cross stitched mother-of-pearl effect buttons (except Oxford Blue: mother-of-pearl effect white buttons)
- Short sleeves with narrow cuffs
- The exclusive B&C Tie-Fix®
- Back yoke with 2 overstitched side pleats
- Left chest pocket
- Inside lap seams for perfect finishing
- Horizontal last buttonhole
- Mitre-shaped bottom hem side reinforcement
- Curved bottom hem



- 70% **combed** cotton - 30% polyester
- Oxford
- 135 g/m<sup>2</sup> = **EASY CARE**
- S > 6XL
- 1 pc/pack & 10 pcs/carton



**DUO CONCEPT**  
with B&C Oxford SSL /women



### SIZES [CM]

| B&C OXFORD SSL /M. SM 002 | US            | S      | M       | L       | XL      | 2XL     | 3XL     | 4XL     | 5XL     | 6XL |
|---------------------------|---------------|--------|---------|---------|---------|---------|---------|---------|---------|-----|
| A COLLAR TO FIT           | CM 37/38      | 39/40  | 41/42   | 43/44   | 45/46   | 47/48   | 49/50   | 51      | 52      |     |
|                           | INS 14,5 / 15 | 15,5   | 16,5    | 17,5    | 18      | 19      | 19,5    | 20      | 21      |     |
| B CHEST TO FIT            | CM 92/97      | 97/102 | 102/107 | 107/112 | 112/117 | 117/122 | 122/127 | 127/132 | 132/137 |     |
|                           | INS 36/38     | 38/40  | 40/42   | 42/44   | 44/46   | 46/48   | 48/50   | 50/52   | 52/54   |     |
| C CHEST SIZE              | CM 111        | 116    | 126     | 136     | 141     | 151     | 156     | 161     | 171     |     |
| D CENTER BACK LENGTH      | CM 80         | 81     | 83      | 85      | 86      | 88      | 89      | 90      | 92      |     |

OEKO-TEX®  
CONFIDENCE IN TEXTILES  
STANDARD 100  
1501003 Certimobil  
Suitable for household use  
www.oeko-tex.com/standard100

THE SHIRT CULTURE  
BE INSPIRED

## MEN'S SHORT SLEEVED EASY CARE OXFORD SHIRT **EASY CARE**

