








## FITTED

Women's long-sleeved DENIM shirt with outstanding details - the ultimate in casual chic for successful living

- DENIM 100% cotton, garment wash finishing
- Long sleeves with two-button cuff
- Darts at bustline & back panel for a feminine shape
- Feminine collar with an extended flap on first button & reverse denim mini-patch to reinforce the DNM RAW look
- Back collar made of 2 parts for vintage look
- Tone-on-tone buttons
- Button placket with tone-on-tone zigzag stitch for a DNM RAW look
- Accessory button in antique brass on the left gauntlet giving the shirt its individual look
- Decorative double needle topstitched yoke at front shoulder
- Bottom sides with gusset (in reverse denim)
- Curved bottom hem
- Decorative features allow to feel good in all situations from casual chic to urban look

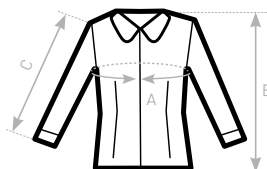


-  100% cotton
-  Denim Twill, Garment wash
-  Denim (6.5 OZ)
-  XS - S - M - L - XL - 2XL
-  1 pc/pack & 20 pcs/carton



**DUO**  
**CONCEPT**

with B&C DNM Vision /men



### SIZES [CM]

B&C DNM VISION /W. SW D86	XS	S	M	L	XL	2XL	3XL
A HALF CHEST	44	47	50	53	56	59	-
B CENTER BACK LENGTH	61	63	65	67	69	71	-
C SLEEVE LENGTH	60,5	62	63,5	65	66,5	68	-

OEKO-TEX®  
CONFIDENCE IN TEXTILES  
STANDARD 100  
1501003 Centexbel  
Tested for harmful substances.  
www.oeko-tex.com/standard100