



ADJUSTED FIT

- Qualitative polycotton poplin with **Easy Care** finish
- Soft feminine collar
- Cross stitched mother-of-pearl effect buttons
- Folded hem sleeves
- Darts at bustline & back panel for a feminine shape
- Horizontal last buttonhole
- Curved bottom hem



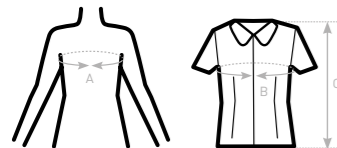
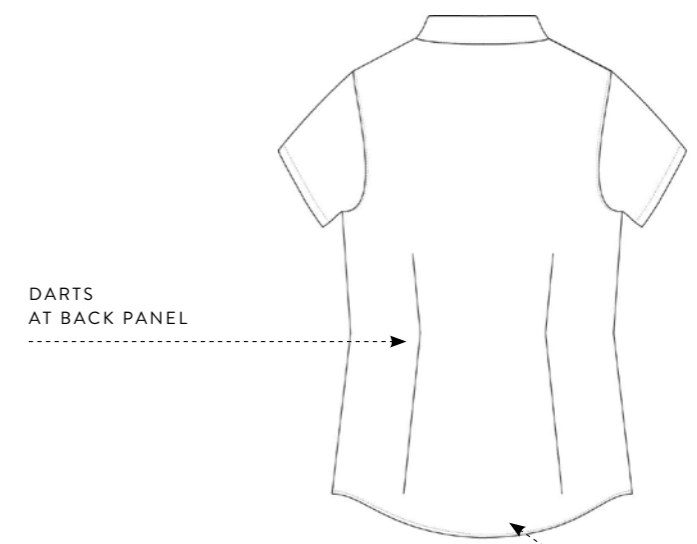
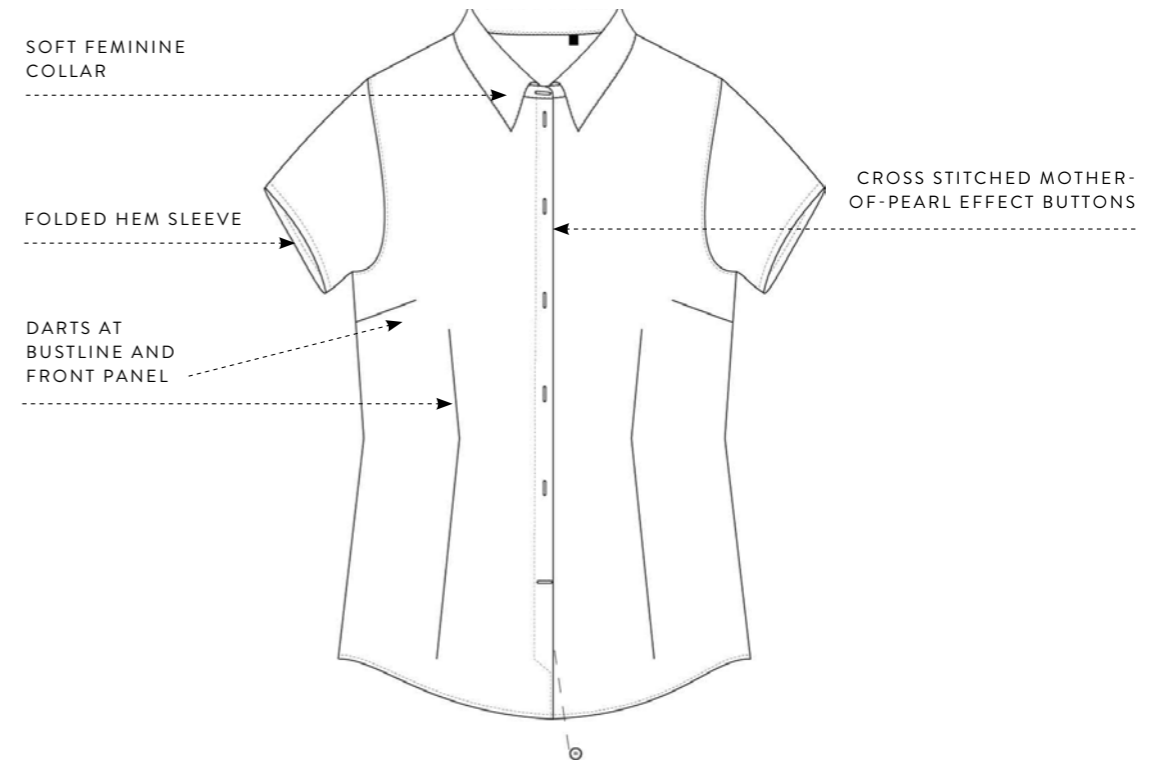
- 65% polyester - 35% **combed** cotton
  - Poplin
  - 115 g/m<sup>2</sup> **EASY CARE**
  - XS > 4XL
  - 1 pc/pack & 10 pcs/carton
- 



**DUO CONCEPT**  
with B&C Smart SSL /men

DURABLE POLYCOTTON WOMEN'S SHORT SLEEVED

EASY CARE POPLIN SHIRT **EASY CARE**



SIZES [CM]

B&C SMART SSL /W. SW P64	US	XS	S	M	L	XL	2XL	3XL	4XL	5XL	6XL
A DRESS SIZE	FR 36	38	40	42	44	46	48	50	-	-	-
	IT 40	42	44	46	48	50	52	54	-	-	-
	EU 34	36	38	40	42	44	46	48	-	-	-
	UK 8	10	12	14	16	18	20	22	-	-	-
B CHEST SIZE	CM 91	96	101	106	111	116	121	126	-	-	-
C CENTER BACK LENGTH	CM 65	66	67	68	69	70	71	72	-	-	-

