



SP5008

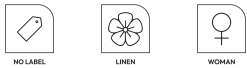
## Ladies' linen dress shirt

- Sustainable, thermoregulating and lightweight fabric.
- No label for limitless customisation.
- Fashionable and hard-wearing.

100% linen. Woven. Comfort fit with dropped shoulders. Collar with collar stand. Placket with white pearlised buttons in recycled plastic. Lined back yoke with pleats. Cuffs with wrist cords. slit and doghouse placket with buttons. Side slit for greater comfort. Single-needle finish on bottom hem. Garment washed after assembly: colours may vary from item to item.



### Certifications



### More information

#### Logistic



#### Country of origin



BD - Bangladesh

#### Customs code



62044990



Organic  
Khaki

White

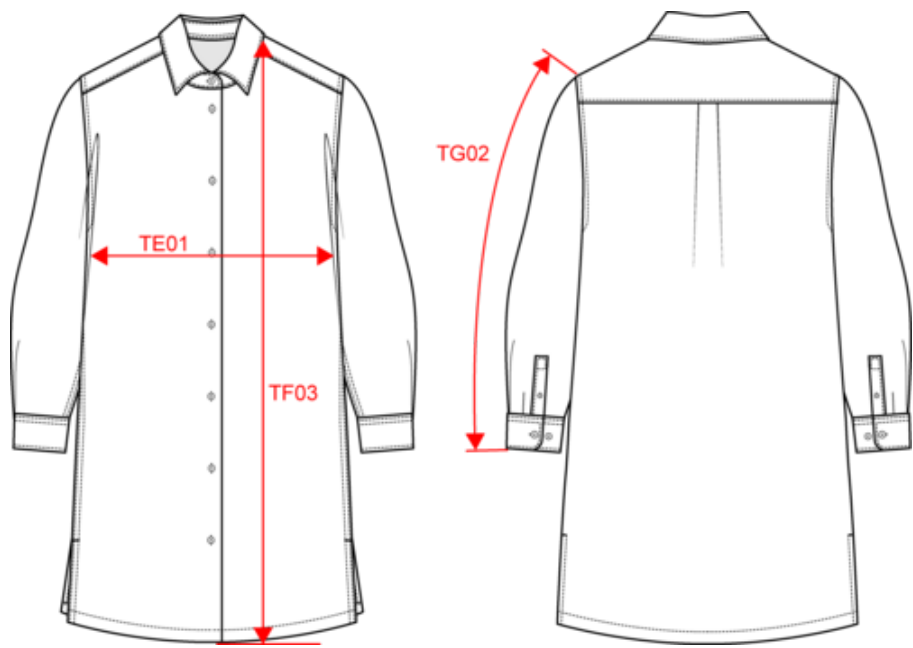




SP5008

Ladies' linen dress shirt

Dimensions (cm)



Measurements in cm	XS	S	M	L	XL
TE01 - 1/2 chest width at 1.5cm below armhole	50.50	53.50	56.50	59.50	62.50
TF01 - Total height from HSP	89.00	91.00	93.00	95.00	97.00
TG02 - Long sleeve length	51.00	52.00	53.00	54.00	55.00



SP5008

Ladies' linen dress shirt



Colours information



**Organic Khaki**  
RVB : 85,87,76  
Pantone C : 418C  
Pantone TCX : 19-0312TCX



**White**  
RVB : 236,236,252  
Pantone C : White  
Pantone TCX : 11-0601TCX

Logistic  1  25

Sizes	Width (cm)	Height (cm)	Length (cm)	Net weight (kg)	Gross weight (kg)	Pieces/Box	Pieces/Bundle
XS	40.00000	17.00000	60.00000	5.80000	7.30000	25	1
S	40.00000	17.00000	60.00000	6.15000	7.65000	25	1
M	40.00000	19.00000	60.00000	6.55000	8.05000	25	1
L	40.00000	19.00000	60.00000	6.90000	8.45000	25	1
XL	40.00000	19.00000	60.00000	7.15000	8.70000	25	1