

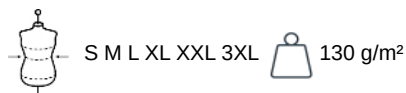


SP507

Men's linen washed effect mao collar shirt

- Sustainable, thermoregulating and lightweight fabric.
- No label for limitless customisation.
- Fashionable and hard-wearing.

100% linen. Woven. Straight fit. Washed effect. Mandarin collar. Added placket with contrasting pearlised buttons in recycled plastic. Wrist cord with doghouse placket. Lined back yoke. Single-needle finish on bottom hem. Slightly rounded hem and side insert finish for added reinforcement. Garment dyed as a whole after assembly: colours may vary slightly between products. This product is likely to rub off in contact with light surfaces or garments.



Certifications



NO LABEL



LINEN



MAN

More information

Logistic



1



25

Country of origin



BD - Bangladesh

Customs code



62052000



Washed
Navy
Blue



Washed
Organic
Khaki

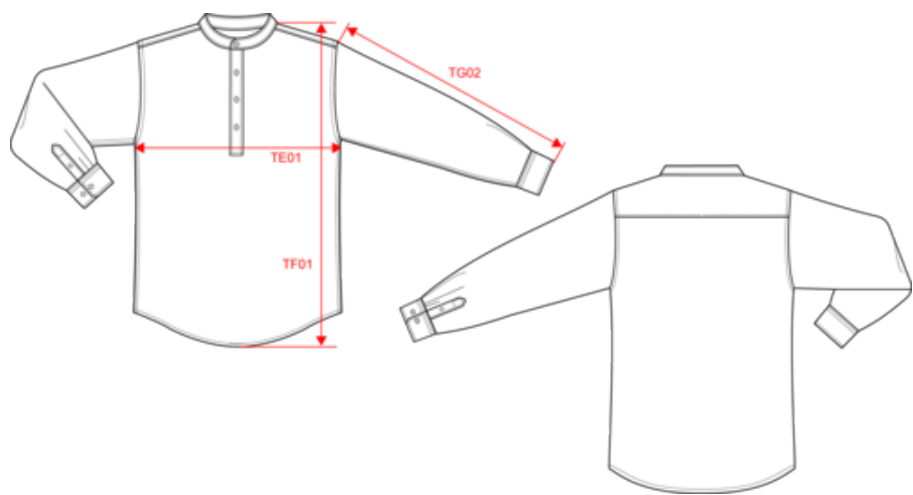




SP507

Men's linen washed effect mao collar shirt

Dimensions (cm)



Measurements in cm	S	M	L	XL	XXL	3XL
TE01 - 1/2 chest width at 1.5cm below armhole	51.00	54.00	57.00	60.00	63.00	
TF01 - Total height from HSP	72.50	74.50	76.50	78.50	80.50	
TG02 - Long sleeve length	64.00	65.00	66.00	67.00	68.00	



SP507

Men's linen washed effect mao collar shirt

Colours information



Washed Navy Blue

RVB : 54,61,75
Pantone C : 432C
Pantone TCX : 19-4023TCX



Washed Organic Khaki

RVB : 85,89,77
Pantone C : 418C
Pantone TCX : 19-0312TCX

Logistic



1



25

Sizes	Width (cm)	Height (cm)	Length (cm)	Net weight (kg)	Gross weight (kg)	Pieces/Box	Pieces/Bundle
S	40.00000	17.00000	60.00000	4.75000	6.25000	25	1
M	40.00000	17.00000	60.00000	5.00000	6.50000	25	1
L	40.00000	17.00000	60.00000	5.25000	6.75000	25	1
XL	40.00000	19.00000	60.00000	5.50000	7.00000	25	1
XXL	40.00000	19.00000	60.00000	5.75000	7.25000	25	1
3XL	40.00000	19.00000	60.00000	6.00000	7.50000	25	1