

SP514

Eco-friendly Ladies' oversized lyocell shirt

- Made from a blend of responsible materials.
- Breathable and hard-wearing fabric.
- No label: 100% customisable for your project.

60 % TENCEL™* Lyocell / 40 % organic cotton. *TENCEL™ is a trademark of Lenzing AG. Oversize fit. Enzyme-washed. Tone-on-tone recycled plastic buttons. Added button placket. Low-cut shirt. Two flap patch pockets on the chest. Panel on back. Drop hem. Side slits. Garment washed after assembly: colours may vary slightly. The colour may rub off on contact with light surfaces or clothing.



Certifications

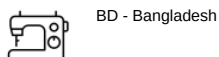


More information

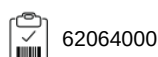
Logistic



Country of origin



Customs code

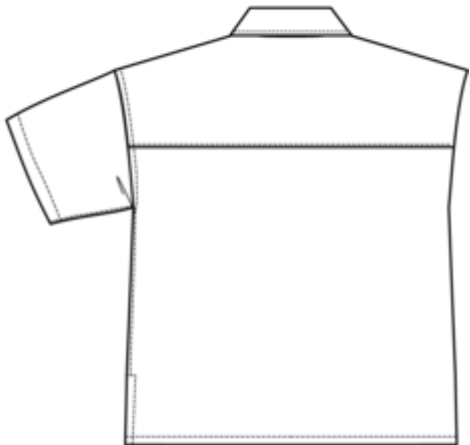
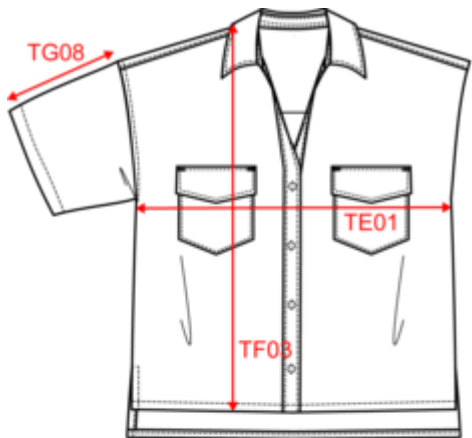




SP514

Eco-friendly Ladies' oversized lyocell shirt

Dimensions (cm)




Measurements in cm	XS	S	M	L	XL
TE01 - 1/2 chest width at 1.5cm below armhole	57.00	60.00	63.00	66.00	69.00
TF03 - Front total height from HSP	57.00	59.00	61.00	63.00	65.00
TG08 - Short sleeve length (rib excluded)	12.00	12.75	13.50	14.25	15.00




SP514

Eco-friendly Ladies' oversized lyocell shirt


Colours information



Washed Dark Navy
RVB : 39,40,49
Pantone C : 426C
Pantone TCX : 19-4011TCX



Washed Organic Khaki
RVB : 85,89,77
Pantone C : 418C
Pantone TCX : 19-0312TCX



Washed White
RVB : 240,238,248
Pantone C : Cool Gray 1C
Pantone TCX : 13-4105TCX

Logistic  1  25

Sizes	Width (cm)	Height (cm)	Length (cm)	Net weight (kg)	Gross weight (kg)	Pieces/Box	Pieces/Bundle
XS	40.00000	17.00000	60.00000	6.60000	8.00000	25	0
S	40.00000	17.00000	60.00000	6.60000	8.00000	25	0
M	40.00000	17.00000	60.00000	6.60000	8.00000	25	0
L	40.00000	17.00000	60.00000	6.60000	8.00000	25	0
XL	40.00000	17.00000	60.00000	6.60000	8.00000	25	0