

SP516

Men's linen washed effect overshirt

- Sustainable, thermoregulating and lightweight fabric.
- No label for limitless customisation.
- Fashionable and hard-wearing.

100% linen. Woven. Straight fit. Washed effect. Placket with contrasting horn-effect buttons in recycled plastic. Slit and button at the cuffs. Collar with fancy collar stand. Two patch pockets with flap and button. Inner hanging loop in the main fabric. Back yoke. Double over stitching on the sides, back yoke and sleeves. Single-needle finish on bottom hem. Ruffled inner lining with personalisation patch in the main fabric. Garment dyed as a whole after assembly: colours may vary slightly between products. This product is likely to rub off in contact with light surfaces or garments.



S M L XL XXL 3XL



245 g/m²

Certifications



LINEN



NO LABEL



MAN

More information

Logistic



5



25



BD - Bangladesh

Customs code



62059010



Washed
Linen
Sand



Washed
Navy
Blue

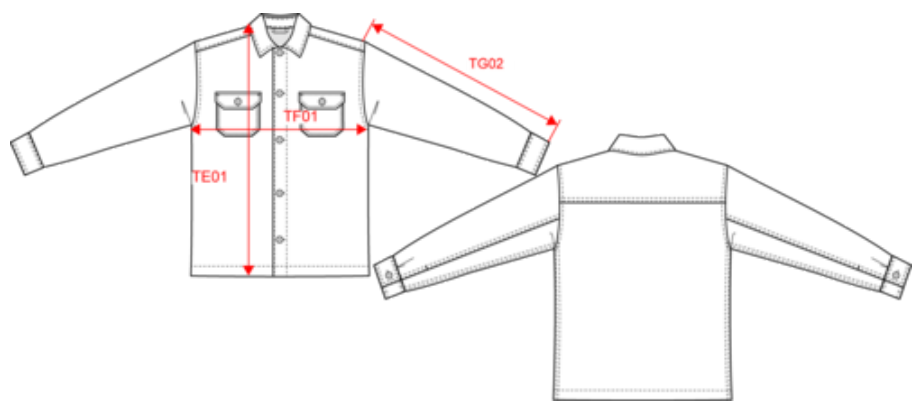




SP516

Men's linen washed effect overshirt

Dimensions (cm)



Measurements in cm	S	M	L	XL	XXL	3XL
TE01 - 1/2 chest width at 1.5cm below armhole	50.00	53.00	56.00	59.00	62.00	65.00
TF01 - Total height from HSP	71.00	73.00	75.00	77.00	79.00	81.00
TG02 - Long sleeve length	65.00	66.00	67.00	68.00	69.00	70.00



SP516

Men's linen washed effect overshirt

Colours information



Washed Linen Sand
RVB : 208,195,181
Pantone C : 482C
Pantone TCX : 12-1404 TCX



Washed Navy Blue
RVB : 54,61,75
Pantone C : 432C
Pantone TCX : 19-4023TCX

Logistic  5  25

Sizes	Width (cm)	Height (cm)	Length (cm)	Net weight (kg)	Gross weight (kg)	Pieces/Box	Pieces/Bundle
S	40.00000	17.00000	60.00000	10.50000	12.25000	25	5
M	40.00000	17.00000	60.00000	11.00000	12.75000	25	5
L	40.00000	17.00000	60.00000	11.75000	13.50000	25	5
XL	40.00000	19.00000	60.00000	12.25000	14.00000	25	5
XXL	40.00000	19.00000	60.00000	12.75000	14.50000	25	5
3XL	40.00000	19.00000	60.00000	13.50000	15.25000	25	5