

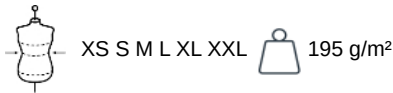


SP725

Eco-friendly Ladies' Washed Effect Lyocell Trousers

- No label: 100% customisable for your project.
- Breathable and hard-wearing fabric.
- Flared fit for greater comfort.

100 % TENCEL™* Lyocell. *TENCEL™ is a trademark of Lenzing AG. Slightly flared cut. Waistband semi-elasticated at the back for extra comfort. Two piped back pockets with reinforced corners. Two side pockets. Rib stitching on the front, back, sides and crotch. Two front darts. Garment dyed after assembly: colours may vary between products. The colour may rub off on contact with light surfaces or clothing. Average weight size M : 250g.



Certifications

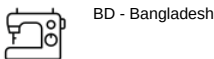


More information

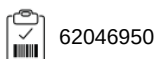
Logistic



Country of origin



Customs code

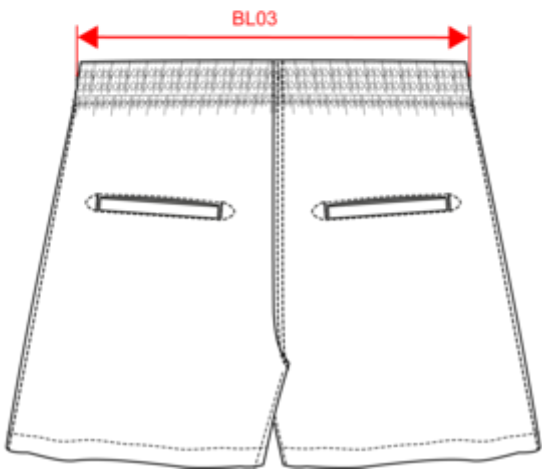
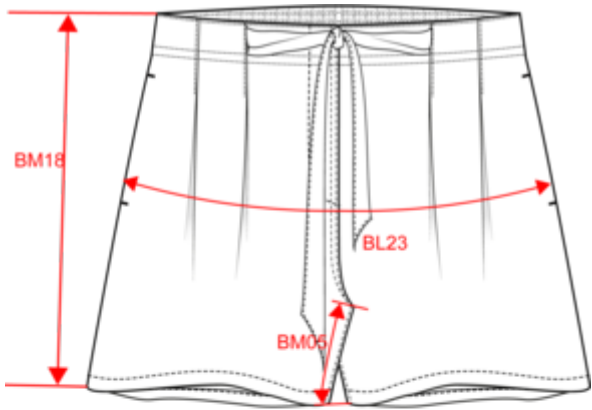




SP725

Eco-friendly Ladies' Washed Effect Lyocell Trousers

Dimensions (cm)



Measurements in cm	XS	S	M	L	XL	XXL
BL03 - 1/2 elasticated waist width relaxed (front over back)	31.50	34.50	37.50	40.50	43.50	
BL23 - 1/2 hip width pleats closed	45.00	48.00	51.00	54.00	57.00	
BM05 - Inseam length	7.00	7.50	7.50	8.00	8.00	
BM18 - Side length (waistband included)	35.00	36.25	37.00	38.25	39.00	



SP725

Eco-friendly Ladies' Washed Effect Lyocell Trousers



Colours information



Washed Navy Blue
RVB : 54,61,75
Pantone C : 432C
Pantone TCX : 19-4023TCX



Washed Organic Khaki
RVB : 85,89,77
Pantone C : 418C
Pantone TCX : 19-0312TCX

Logistic  1  20

Sizes	Width (cm)	Height (cm)	Length (cm)	Net weight (kg)	Gross weight (kg)	Pieces/Box	Pieces/Bundle
XS	40.00000	12.00000	60.00000	4.80000	5.82000	20	1
S	40.00000	12.00000	60.00000	4.80000	5.82000	20	1
M	40.00000	12.00000	60.00000	4.80000	5.82000	20	1
L	40.00000	12.00000	60.00000	4.80000	5.82000	20	1
XL	40.00000	12.00000	60.00000	4.80000	5.82000	20	1
XXL	40.00	0.00	60.00	0.00000	0.00000	20	1