

NEW

B&C #ORGANIC E150 /women

TW 02B



Hi, I'm organic! I'm the conscious short sleeve T-shirt for women, I'm contemporary, I'm available in 20 fascinating colours and I'm soft & exceptionally printable.



T-SHIRT - SINGLE JERSEY

100% pre-shrunk ring-spun combed OCS Organic Cotton
145 g/m² | XS - S - M - L - XL - 2XL - 3XL*
10 pcs/pack & 100 pcs/carton

* Only available in Black Pure, Navy Blue, Heather Grey, Royal, Red, White

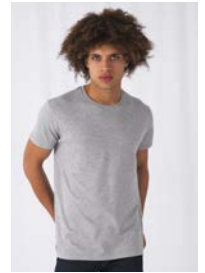
Heather Grey: made with 90% organically grown cotton



Want the same style but in men?

Try the B&C #organic E150

DUO♂
CONCEPT



T-SHIRTS | WOMEN



HEATHER GREY: 90% PRE-SHRUNK RING-SPUN COMBED OCS ORGANIC COTTON 10% VISCOSE



#Style

- Mainstream Organic contemporary fit **#allpurposes**
- Side seams construction **#feminineshape**
- Thin collar rib to highlight modern neck opening **#uptodate**
- Identical colours (20) for men and women **#perfectduo**
- 7 sizes - XS to 3XL **#fitsall**
- Visible «Hi, I'm Organic» neck tab to highlight the organic value of the garment
- Easy branding solution - B&C No Label Solution **#customiseme**

#Quality / Handfeel

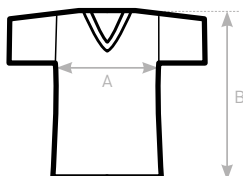
- Made of 100% OCS Organic ring-spun Combed Cotton **#ringspun**
- Resistant fabric and ultra-soft handfeel **#combed**
- Organic OCS certified Cotton **#sustainable**
- STANDARD100 by OEKO-TEX® certification for the best comfort of your skin **#Oeko-Tex100**
- Middle weight fabric 150 gsm **#whatevertheweather**

#Printability / Decoration

- Very smooth and soft surface for perfect printing results **#details**
- Tested and approved for all standard printing techniques applicable on cotton **#beinspired**
- B&C No Label Solution for perfect rebranding **#customiseme**
- Folded in box to ease the decoration process **#makemylifeeasy**

Labels

- Visible «Hi, I'm Organic» neck tab to highlight the organic value of the garment
- Easy branding solution - B&C No Label Solution
- Straightforward size identification through size chip on the neck
- Tear away label, with all mandatory information following EU regulation, in side seam



SIZES [CM]

B&C #ORGANIC E150 /W. TW 02B	XS	S	M	L	XL	2XL	3XL
A HALF CHEST	41	44	47	50	53	56	59
B BODY LENGTH FROM NECK POINT	58	60	62	64	66	68	70

HI! I'M
ORGANIC

B&C CERTIFICATIONS

At B&C Collection, we believe that you shouldn't have to choose between something that looks good and something that does good too. That's why we are proud of our industry certifications.



OCS Certification

The B&C ORGANIC T-shirts, polo shirts and sweatshirts are made with OCS certified organic cotton. OCS, Organic Content Standard, provides an independent certification that the textiles is made with organic grown materials. The aim of this standard is to guarantee the traceability and integrity of the raw materials during all the manufacturing stages. It guarantees organic cotton purity of the style you buy.

TM042, TW043, TM044, TW045, TM046, TW047, TM070, TW071, TM048, TW049, TM072, TW073, TU01B, TW02B, PM430, PW440.
ALL COLOURS: CONTAINS 100% ORGANICALLY GROWN COTTON.
CERTIFIED BY CONTROL UNION ACCORDING TO THE OCS STANDARD.
THE COTTON GROUP - CU1030092

TM042, TW043, TM070, TW071, TM072, TW073, TM048, TW049, TU01B, TW02B, PM430, PW440.
SPORT GREY & HEATHER GREY: MADE WITH 90% ORGANICALLY GROWN COTTON. CERTIFIED BY CONTROL UNION ACCORDING TO THE OCS STANDARD. THE COTTON GROUP - CU1030092

WU31B, WW32B, WU33B, WW34B, WU35B, WW36B.
ALL COLOURS: CONTAINS 80% ORGANICALLY GROWN COTTON.
CERTIFIED BY CONTROL UNION ACCORDING TO THE OCS STANDARD.
THE COTTON GROUP - CU1030092

WU31B, WW32B, WU33B, WW34B, WU35B, WW36B.
HEATHER GREY: MADE WITH 71% ORGANICALLY GROWN COTTON.
CERTIFIED BY CONTROL UNION ACCORDING TO THE OCS STANDARD.
THE COTTON GROUP - CU1030092



PETA certifies B&C as 100% Vegan

We're proud to announce that we are officially certified by PETA as an approved vegan brand. It means there are no animal products involved in any part of the creation of our products. PETA (People for the Ethical Treatment of Animals) is the largest animal rights organisation in the world, with more than 6.5 million members and supporters. The companies that have signed PETA's statement of assurance have verified that neither they nor their ingredient suppliers conduct, commission, or pay for any tests on animals for their ingredients, formulations, or finished products anywhere in the world and won't do so in the future.

RCS Certification

The RCS (Recycled Claim Standard) is used as a chain of custody standard to track recycled raw materials through the supply chain. The RCS verifies the presence and amount of recycled material in a final product. This happens through input and chain-of-custody verification from a third party. It allows for the transparent, consistent and comprehensive independent evaluation and verification of recycled material content claims on products.

WU31B, WW32B, WU33B, WW34B, WU35B, WW36B.
ALL COLOURS: CONTAINS 20% RECYCLED CERTIFIED POLYESTER.
CERTIFIED BY CONTROL UNION ACCORDING TO THE RCS STANDARD.
THE COTTON GROUP - CU1030092

WU31B, WW32B, WU33B, WW34B, WU35B, WW36B.
HEATHER GREY: CONTAINS 25% RECYCLED CERTIFIED POLYESTER.
CERTIFIED BY CONTROL UNION ACCORDING TO THE RCS STANDARD.
THE COTTON GROUP - CU1030092